



VERNON TOOL™

PIPE and TUBE CUTTING MACHINES



www.vernontool.com

With nearly 1,000 installations worldwide, Vernon Tool Company is the industry's preferred source and global supplier of 3D profiling, customized pipe cutting, and metal fabrication machinery.

Based in Oceanside, California and serving the world, we take great pride in offering innovative and technically advanced machinery that sets the industry standard for quality and lasting performance. Our professional team of engineers and technicians utilize hundreds of combined years of experience and industry expertise to manufacture and continuously deliver "world class" profiling equipment and industrial pipe cutters.



PRODUCT SPECIFICATIONS

MPM <i>Pipe Cutting Machine</i>	MTC <i>Master Tube Cutter</i>	SCC <i>Straight Cut-Off Machine</i>	PPM <i>Pantograph</i>	VAS <i>Vernon Abrasive Saw</i>
Capacity: 2"-84" (5-213 cm)	Capacity: 1"-8" (2.5-20 cm)	Capacity: 60" (152 cm)	Capacity: 2"-48" (5-122 cm)	Capacity: 1"-24" (2.5-61 cm)
Number of Axes: 2, 5 & 6	Number of Axes: 5	Number of Axes: 1	Number of Axes: 2	Number of Axes: 1
Operation: CNC Controlled	Operation: CNC Controlled	Operation: Mechanized	Operation: Mechanized	Operation: Semi-Automatic
Software: WinMPM	Software: WinMPM	Software: NA	Software: NA	Software: NA
Cutting Options: Plasma, Oxy/fuel	Cutting Options: Plasma, Oxy/fuel	Cutting Options: Plasma, Oxy/fuel	Cutting Options: Plasma, Oxy/fuel	Cutting Options: Abrasive
Types of Cuts: All	Types of Cuts: All	Types of Cuts: Straight	Types of Cuts: T-K-Y	Types of Cuts: Straight
Types of Holes: All	Types of Holes: All	Types of Holes: N/A	Types of Holes: N/A	Types of Holes: N/A
Weld Prep/Bevel: Automatic, Manual	Weld Prep/Bevel: Automatic	Weld Prep/Bevel: Manual	Weld Prep/Bevel: Manual	Weld Prep/Bevel: Abrasive
Loading/Unloading: Automated Option	Loading/Unloading: Manual	Loading/Unloading: Automated Option	Loading/Unloading: Automated Option	Loading/Unloading: Conveyor Assisted
Description: Roller-bed style machine fully supports pipe and utilizes servo driven rollers to provide cutting rotation and lifter conveyors for automatic loading/unloading. Servo driven profiling axes position the torch and provide all torch motion and orientation. Automatic, servo driven height sensing system compensates vertical position for out-of-round pipe. In-feed and out-feed conveyors available for loading/unloading.	Description: A servo driven rotating chuck provides rotation and longitudinal motion. Two additional profiling axes provide torch angle and linear motion. Automatic, mechanically driven height sensing system compensates vertical position for out-of-round pipe.	Description: Roller-bed style machine fully supports pipe and utilizes rollers to provide cutting rotation and lifter conveyors for loading/unloading. Manually adjustable torch bracket locates torch and orientates angle. In-feed and out-feed conveyors are available for loading/unloading. Two torch feature allows two simultaneous cuts and out-of-round compensation.	Description: Roller-bed style machine fully supports pipe and utilizes rollers to provide cutting rotation and lifter conveyors for loading/unloading. Mechanically driven cams and gears position the torch and provide all torch motion. In-feed and out-feed conveyors are available for loading/unloading.	Description: Abrasive wheel cuts pipe while pipe rotates on mechanized rollers. A bevel is then applied with grinding wheel leaving a machined finish.



PIPE MACHINE SELECTION GUIDE

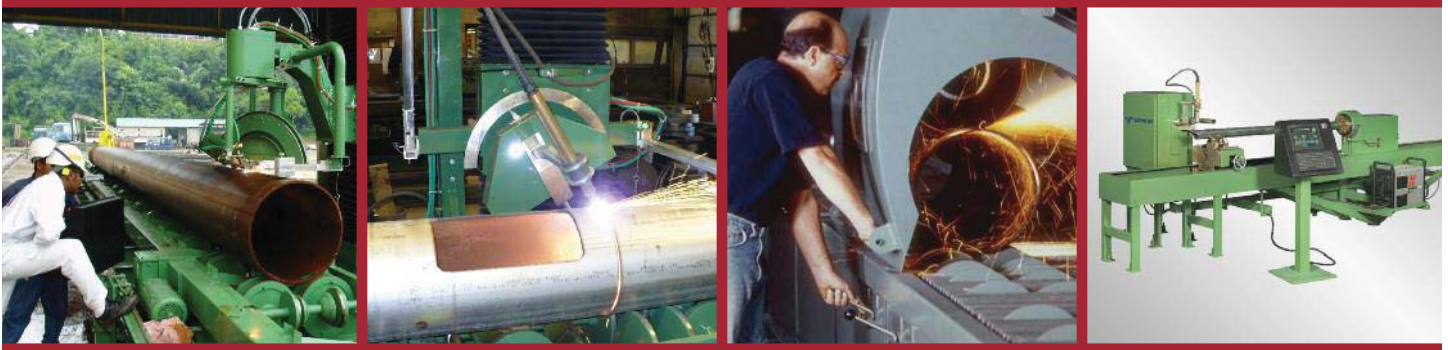
Machine Type		Pipe OD				
		1"-6" (and rectangular)	2"-24"	3"-48"	4"-54"	14"-60"
Mechanized	Abrasive Saw		VAS-0124			
	1-Axis Machines		SCC-0224	SCG-0348		
	2-Axis Machines		PPM-0224	PPM-0348		
CNC Controlled	2-Axis Machines		MPM2-0224	MPM2-0348	MPM2-0454	
	5-Axis Machines	MTC4-0106	MPM4-0224	MPM4-0348	MPM4-0454	
	6-Axis Machines		MPM5-0224	MPM5-0348	MPM5-0454	MPM5-1460

6-Axis Pipe Cutting Machine

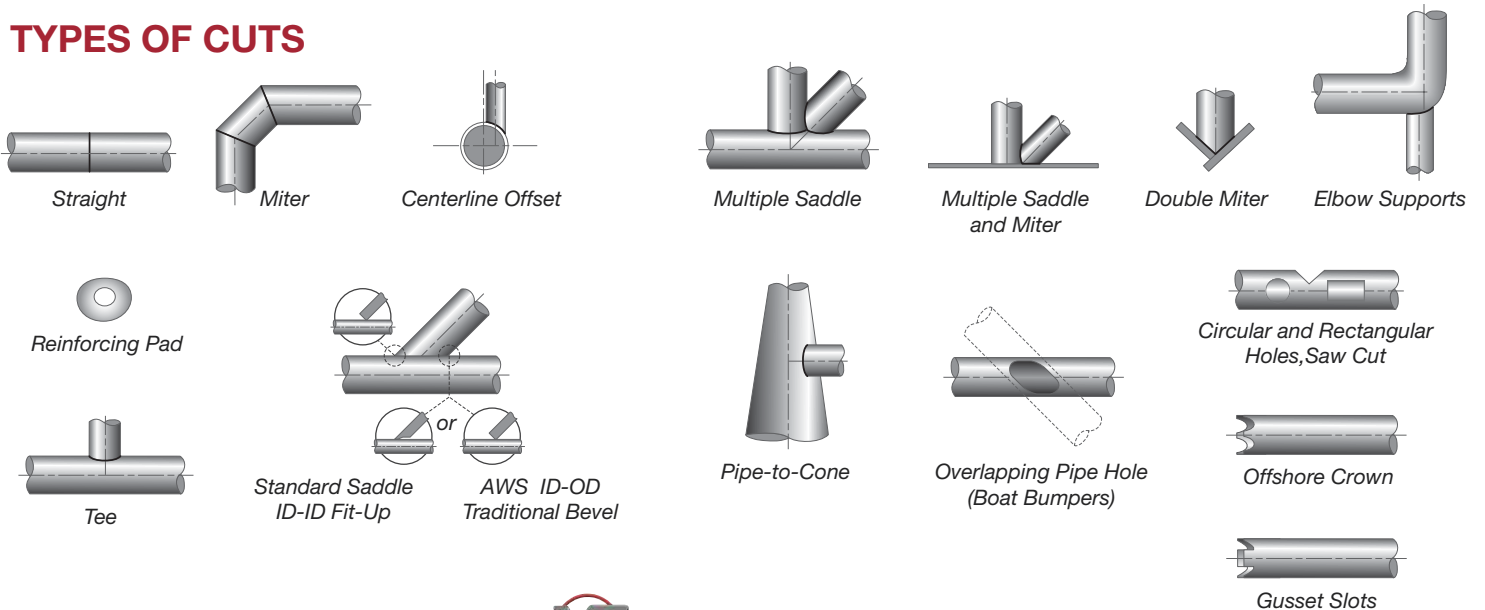
5-Axis Pipe Cutting Machine

Abrasive Saw (VAS)

Master Tube Cutter (MTC)



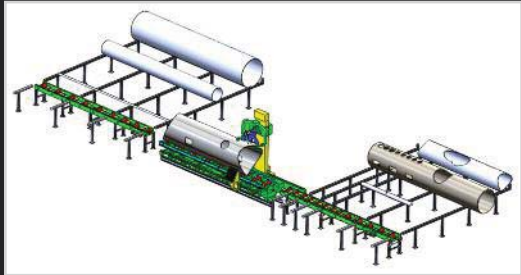
TYPES OF CUTS



The VERNON TOOL™ Advantage

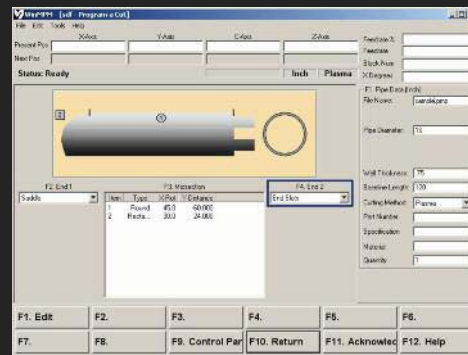
Pipe Transport/Material Handling

- Roller bed design optimizes production.
- Eliminates need for crane/forklift while loading/unloading
- Improved safety
- Up to 300% more efficient when compared to chucking systems
- Transport pipe throughout facility



WinMPM Interface

- Program complex cuts in just minutes
- Download direct from most structural CAD packages
- Program off-line at engineer's workstation



Service

Vernon Tool's Ve-Assist allows direct communication between the user and the supplier to troubleshoot and train in real time with Vernon pipe cutting machines in the field over a secure broadband connection:

- Service experts log on the machine to observe, exchange data files, update operating systems, and diagram procedures or problems.
- The dedicated web link also serves as a valuable tool for demonstration and training purposes on desktop PCs.

A virtual service technician is side-by-side the machine operator to maximize machine productivity and operator efficiency. Post-warranty contracts also include this innovative service to ensure customers' ongoing satisfaction and success.



Accessories and Options



Pre-Heat Torch



Marking System



Modular Extraction Hood

CUSTOMER ASSISTANCE POLICY

The business of The Lincoln Electric Company is manufacturing and selling high quality welding equipment, consumables, and cutting equipment. Our challenge is to meet the needs of our customers and to exceed their expectations. On occasion, purchasers may ask Lincoln Electric for information or advice about their use of our products. Our employees respond to inquiries to the best of their ability based on information provided to them by the customers and the knowledge they may have concerning the application. Our employees, however, are not in a position to verify the information provided or to evaluate the engineering requirements for the particular weldment. Accordingly, Lincoln Electric does not warrant or guarantee or assume any liability with respect to such information or advice. Moreover, the provision of such information or advice does not create, expand, or alter any warranty on our products. Any express or implied warranty that might arise from the information or advice, including any implied warranty of merchantability or any warranty of fitness for any customers' particular purpose is specifically disclaimed.

Lincoln Electric is a responsive manufacturer, but the selection and use of specific products sold by Lincoln Electric is solely within the control of, and remains the sole responsibility of the customer. Many variables beyond the control of Lincoln Electric affect the results obtained in applying these types of fabrication methods and service requirements.

Subject to Change – This information is accurate to the best of our knowledge at the time of printing. Please refer to www.lincolnelectric.com for any updated information.



VERNON TOOL COMPANY

503 Jones Road, Oceanside, CA 92058
 Phone: 760-433-5860 • Fax: 760-757-2233
 Web: www.vernontool.com • Email: sales@vernontool.com

A Lincoln Electric Company
 Specifications subject to change without notice.
 © 2010 Vernon Tool Company. Printed in U.S.A.
 Catalog No. : MC10-61 (8/10)